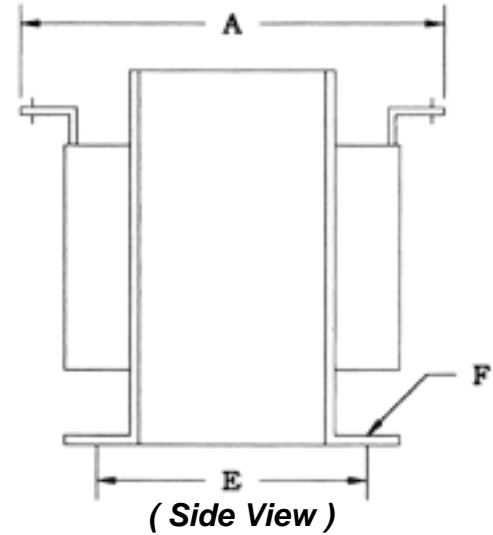
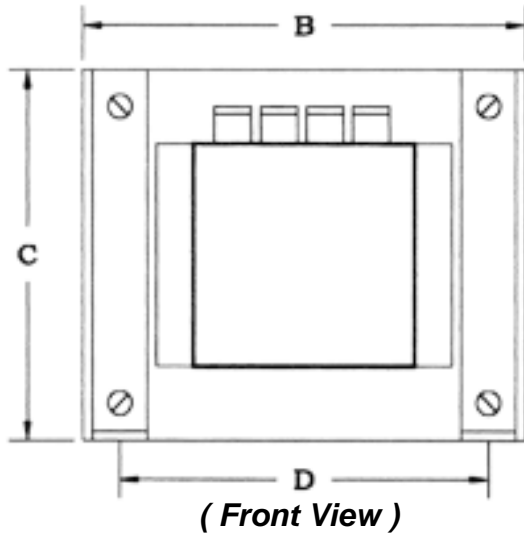


Single Phase Control Transformers



FEATURES:

- All units are 1 phase 60 Hz
- All units have 100% copper windings
- All units are designed to operate at 55 C rise
- 230/460 or 240/480 V dual primaries

OPTIONAL FEATURES:

- 50/60 Hz operation
- Class B (80 C) or class F(115 C) temp rise
- NEMA 1 ventilated enclosure floor mounted
- Faraday electrostatic shield
- Multi-Tap primary voltages
- Touchproof terminal blocks or flexible leads

Specifications

VA	A	B	C	D	E	F	Approx. Weight
50	4.25	3.00	2.50	2.50	2.56	.19 x .38	3 LBS.
75	4.50	3.00	2.50	2.50	2.75	.19 x .38	4 LBS.
100	5.00	3.00	2.50	2.50	3.35	.19 x .38	5 LBS.
150	5.00	3.88	3.25	3.13	3.06	.22 x .50	6 LBS.
250	6.25	4.50	3.88	3.75	3.13	.22 x .50	10 LBS.
300	6.50	4.50	3.88	3.75	3.36	.22 x .50	10 LBS.
350	6.75	4.50	3.88	3.75	3.75	.22 x .50	12 LBS.
500	7.50	4.88	4.25	4.00	4.63	.22 x .50	18 LBS.
750	7.75	5.25	4.50	4.38	5.00	.31 x .50	24 LBS.
1000	7.75	6.75	5.75	5.75	4.00	.31 x .50	31 LBS.
1500	9.50	6.75	5.75	5.75	5.75	.31 x .50	42 LBS.
2000	10.00	6.75	5.75	5.75	6.38	.31 x .50	56 LBS.
3000	6.00	11.88	8.75	6.75	4.75	.406 x .813	71 LBS.
5000	9.00	11.88	8.75	6.75	4.75	.406 x .813	130 LBS.